

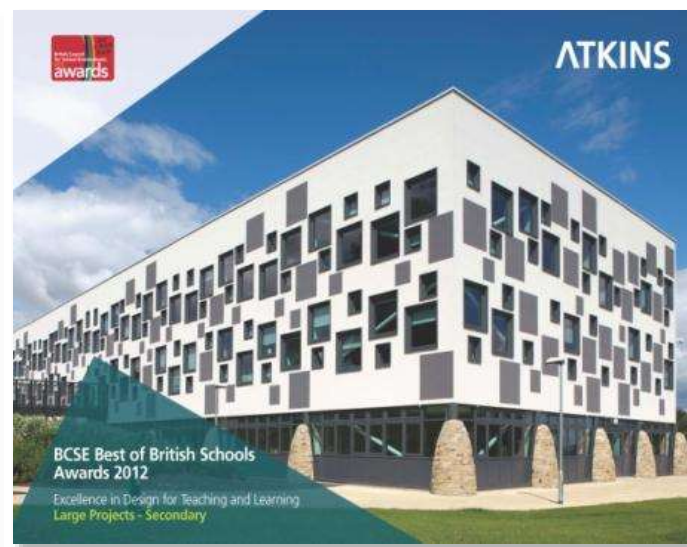
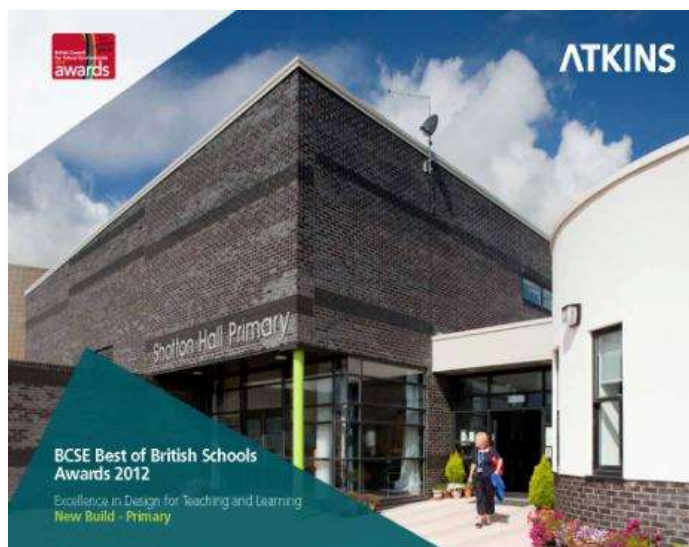
# From Factory to Forest

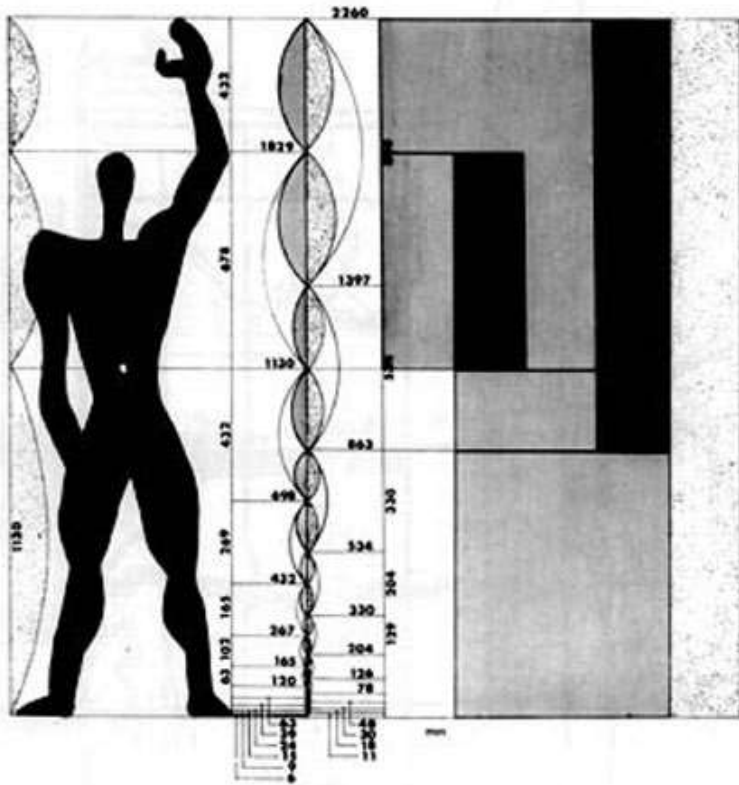
Lime Tree Primary Academy, Manchester

Philip Watson, Design Director

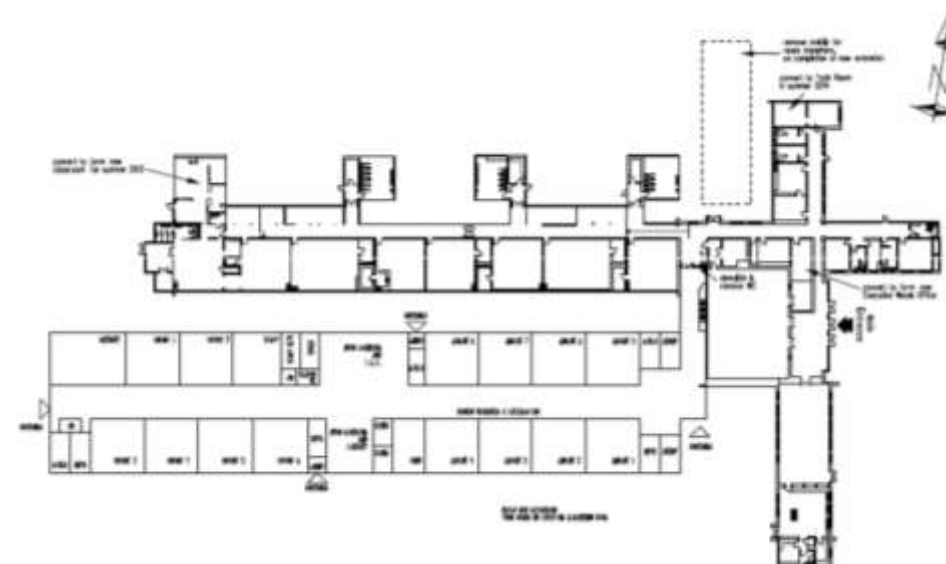
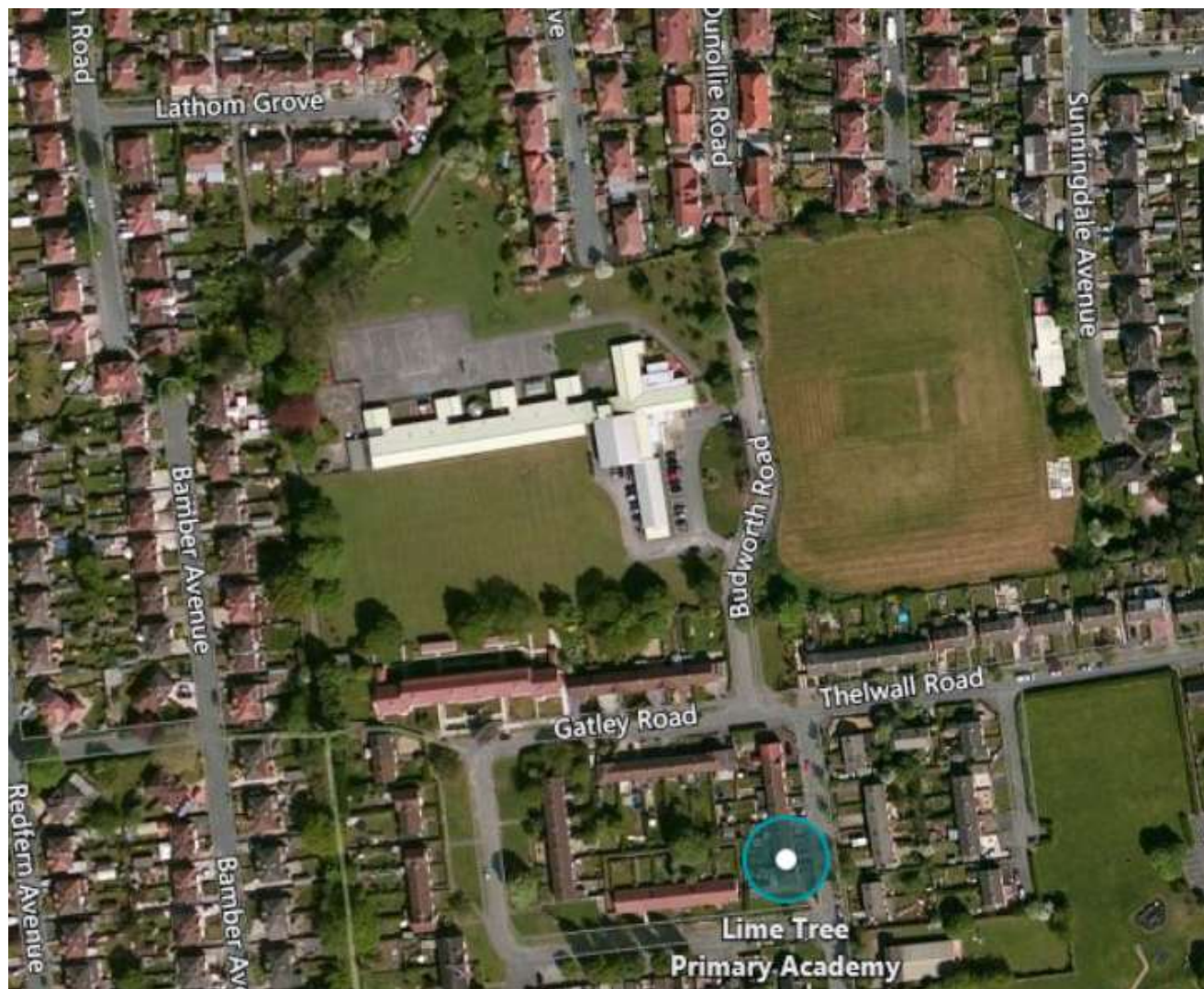
ATKINS







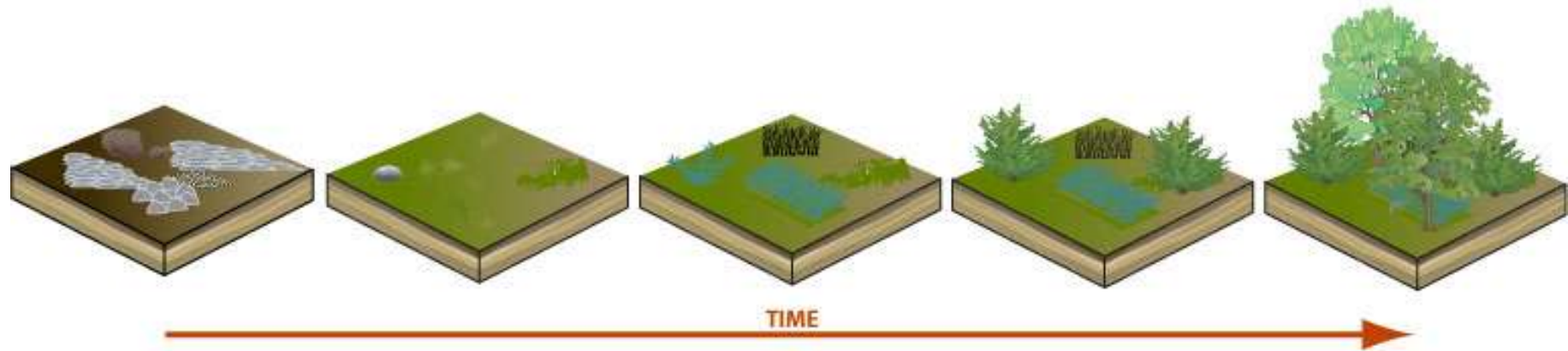
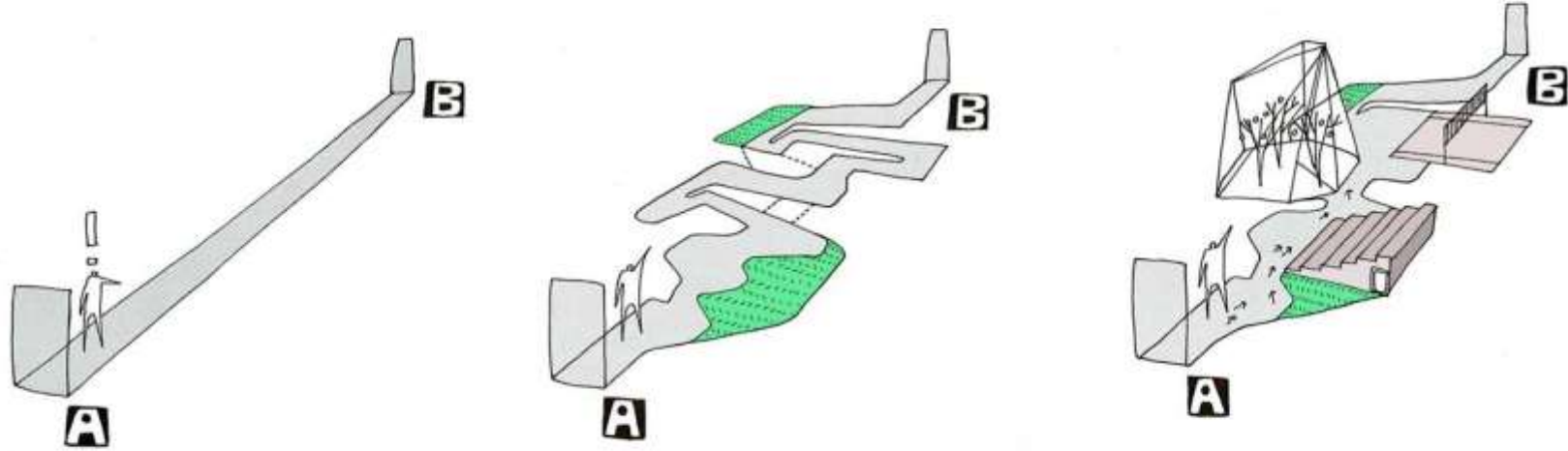




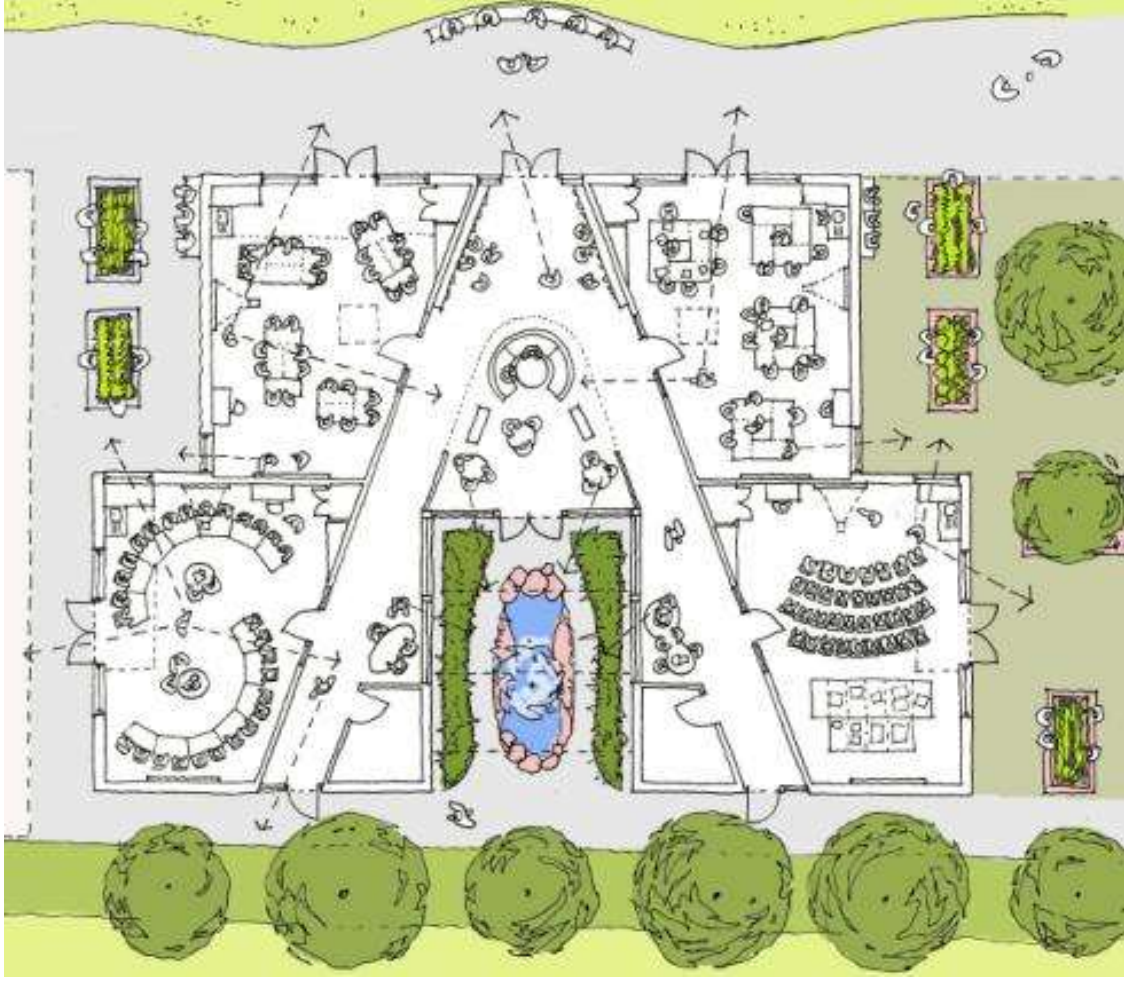




LAING O'ROURKE







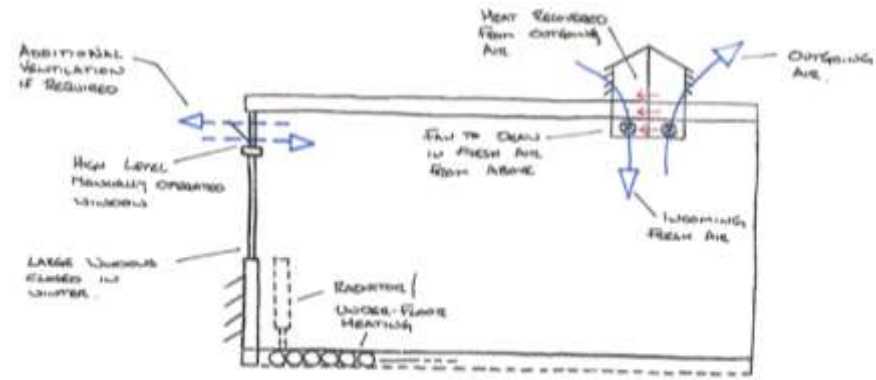




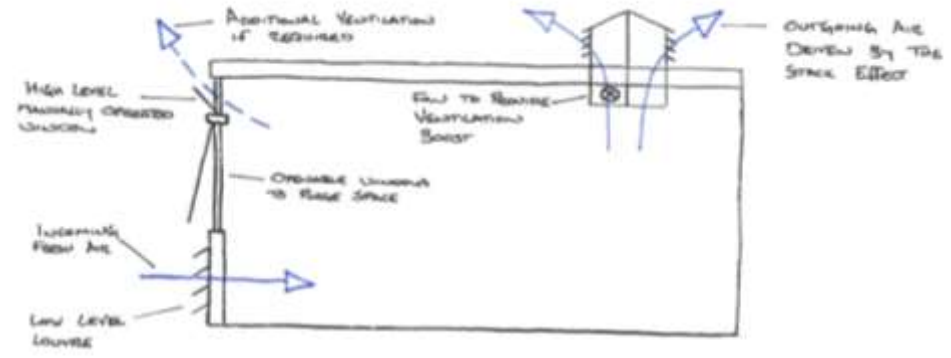


- 1. Playing fields
- 2. Existing building
- 3. Central courtyard

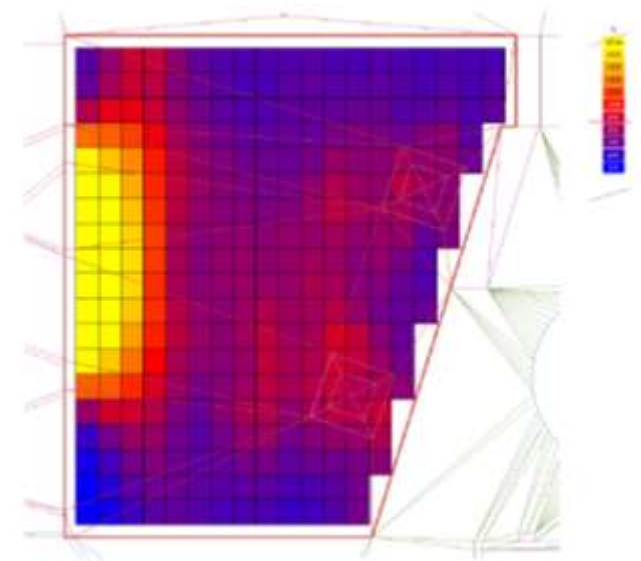
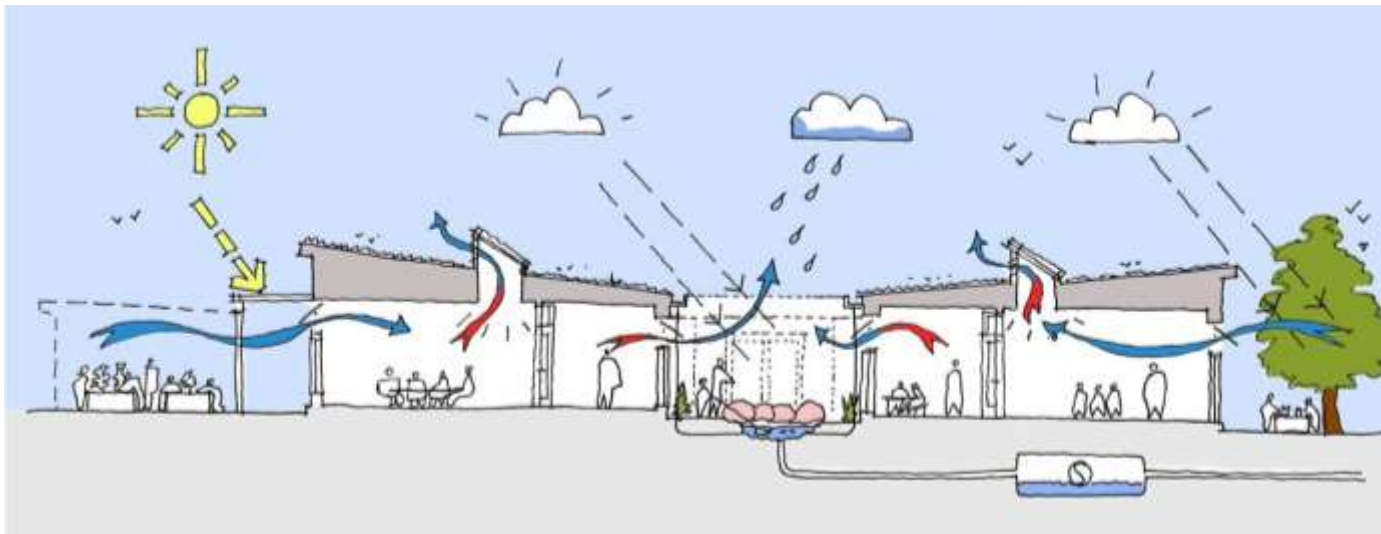
- 4. Central avenue
- 5. Pavilions
- 6. Courtyards



2b. ASSISTED STACK  
WINTER STRATEGY

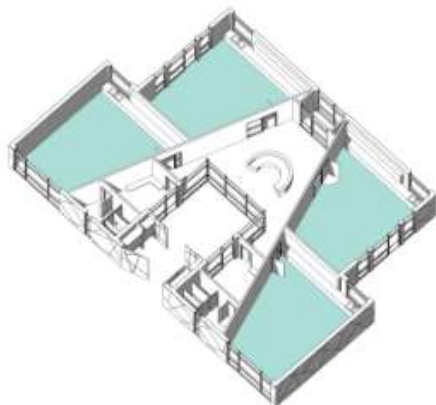


2a. ASSISTED STACK  
SUMMER STRATEGY

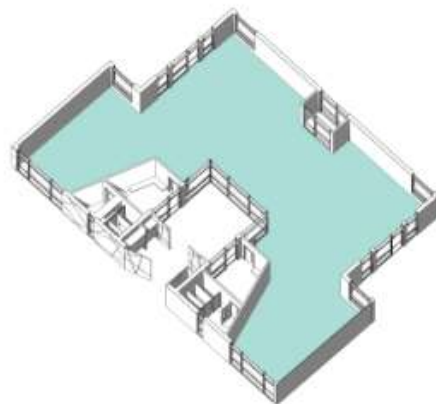




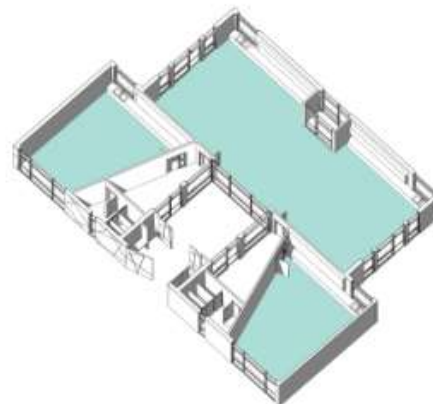
LAING O'ROURKE



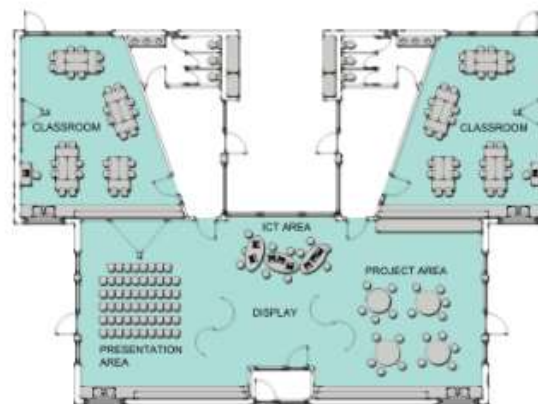
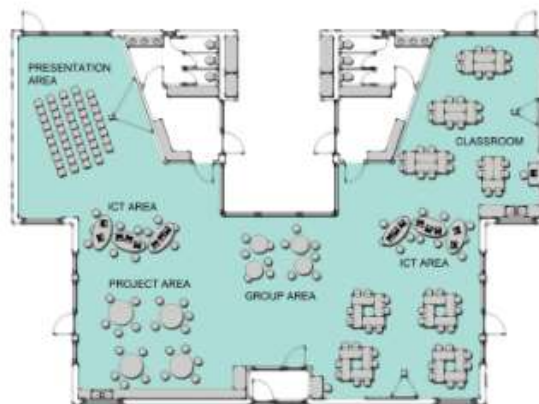
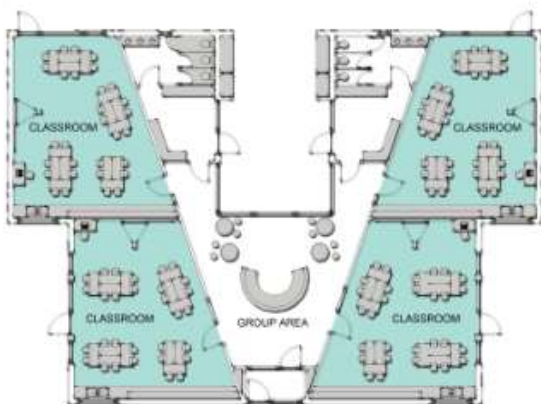
**CURRENT PLAN**  
4 CLASSROOMS AND 1 OPEN PLAN GROUP AREA

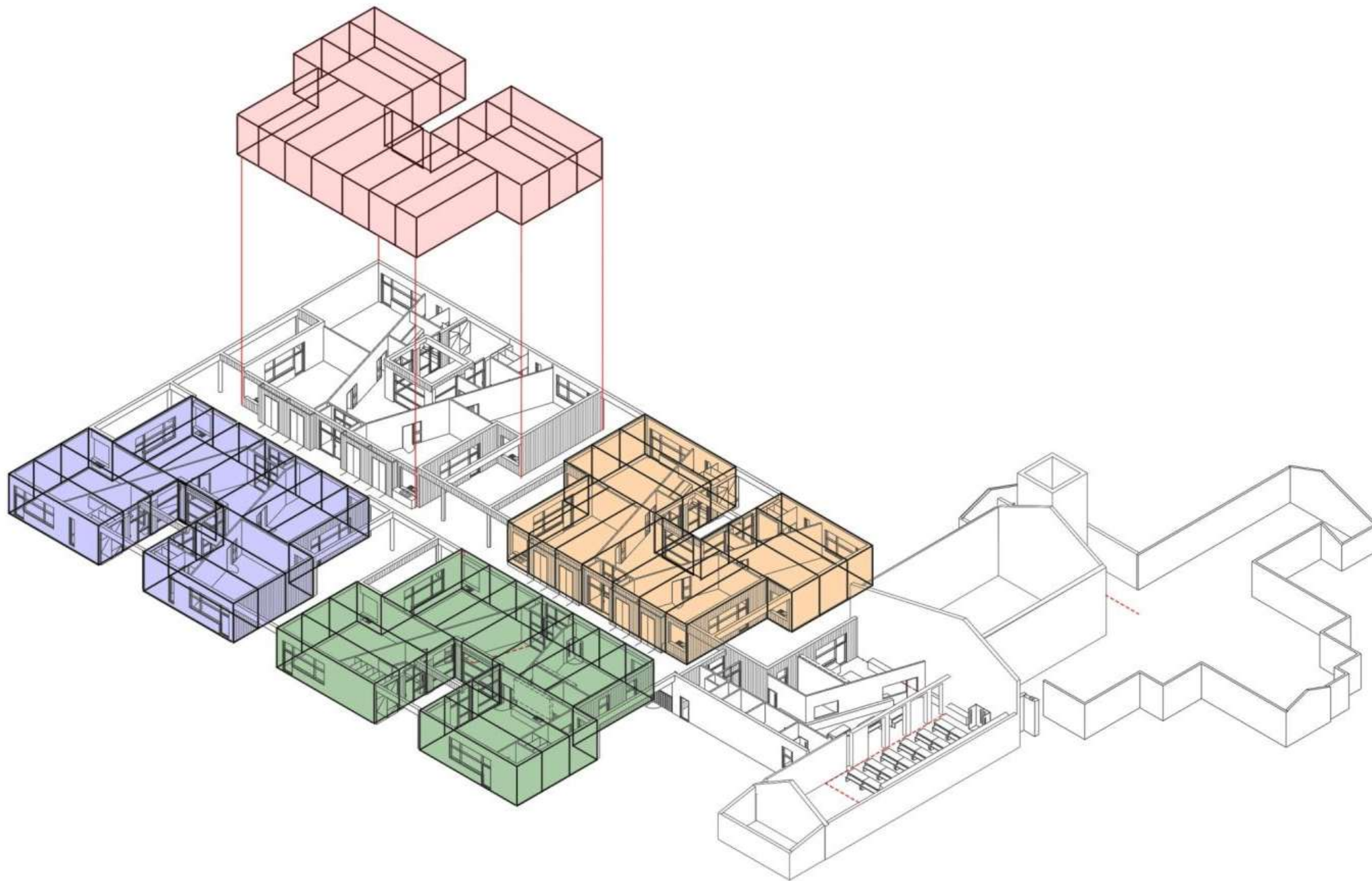


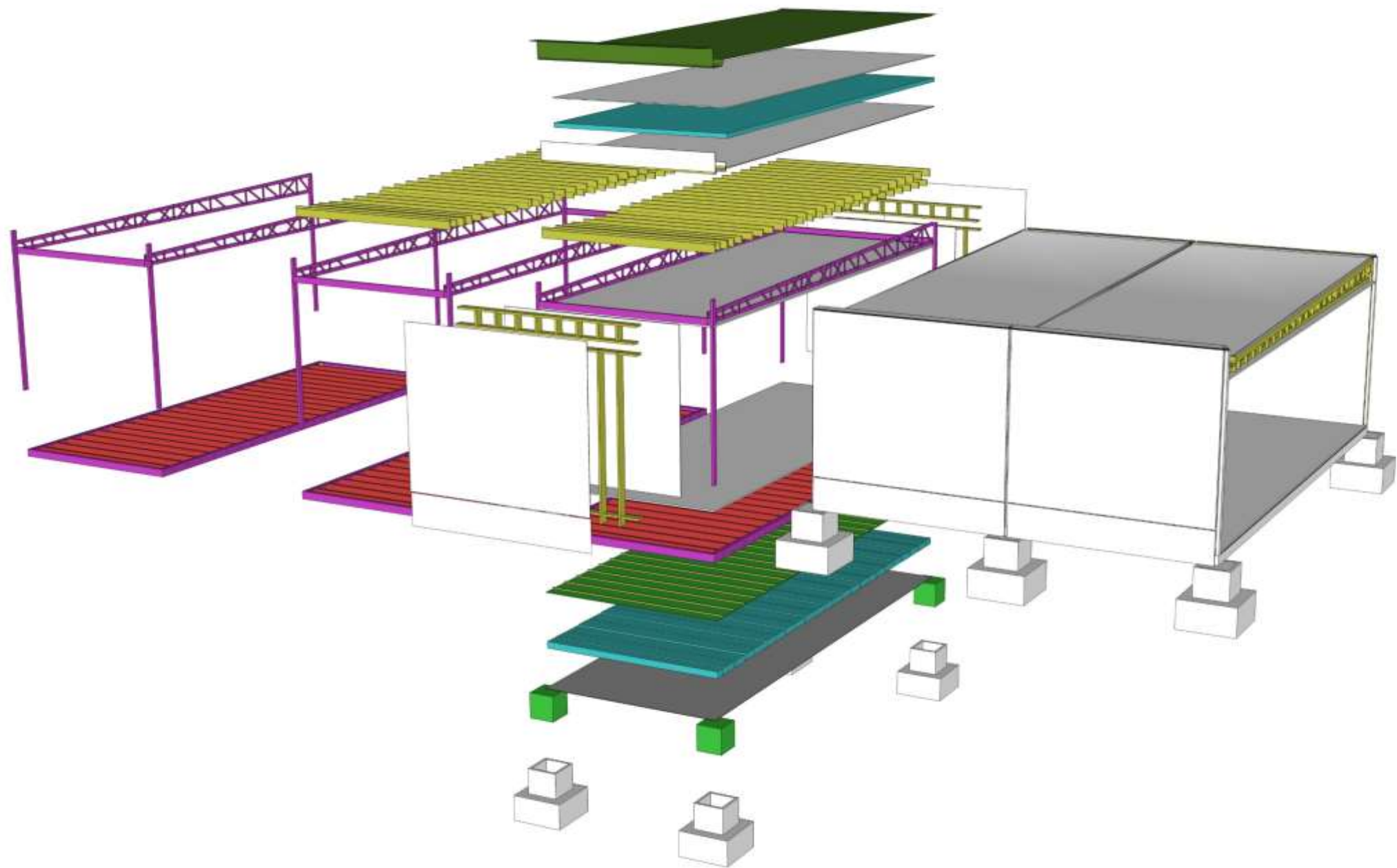
**ALTERNATIVE 1**  
1 LARGE OPEN PLAN LEARNING SPACE

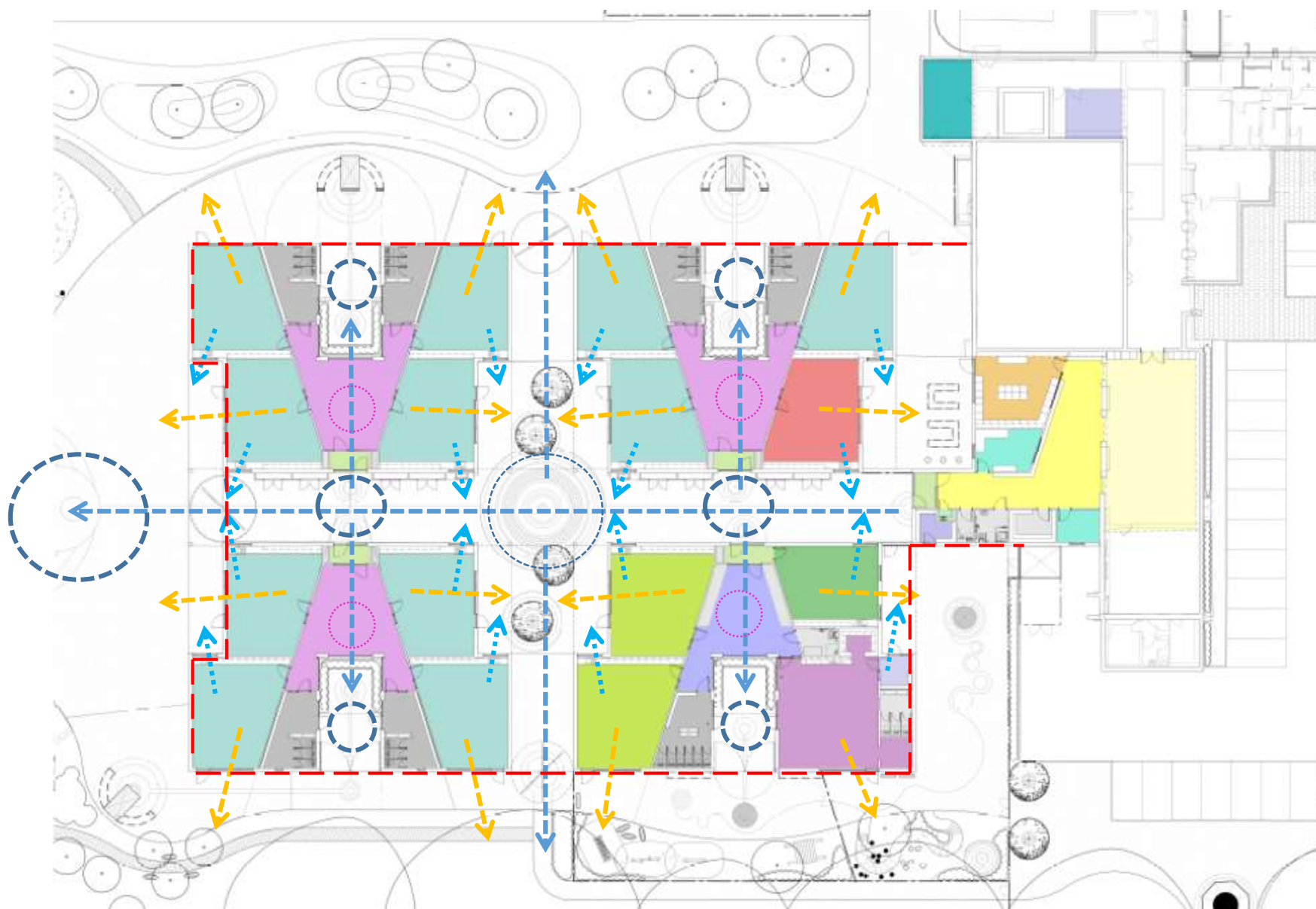


**ALTERNATIVE 2**  
2 CLASSROOM & 1 OPEN PLAN LEARNING SPACE











VERTICAL TIMBER CLADDING  
TO THE INNER PERIMETER OF  
EXTERNAL WALLS ONLY.

DARK GREY PPC ALUMINIUM  
DOOR & WINDOWS. COLOUR  
VARIATION TO OPENING  
LIGHTS TO MATCH WALL  
CLADDING.

RAIN SCREEN CLADDING TO  
OUTER PERIMETER ONLY.  
ARRANGEMENT AND COLOUR  
COMBINATION MAY VARY TO  
COMPLY WITH MANUFACTURER'S  
METHODS AND INSTALLATION.

North elevation A

100



DARK GREY PPC ALUMINIUM  
DOOR & WINDOWS. COLOUR  
VARIATION TO OPENING  
LIGHTS TO MATCH WALL  
CLADDING.

RAIN SCREEN CLADDING TO OUTER  
PERIMETER ONLY. ARRANGEMENT  
AND COLOUR COMBINATION MAY  
VARY TO COMPLY WITH  
MANUFACTURER'S METHODS AND  
INSTALLATION.

DARK GREY SKIN MAXIMUM  
HIGH RAINFALL THROUGHOUT.

South Elevation C

100







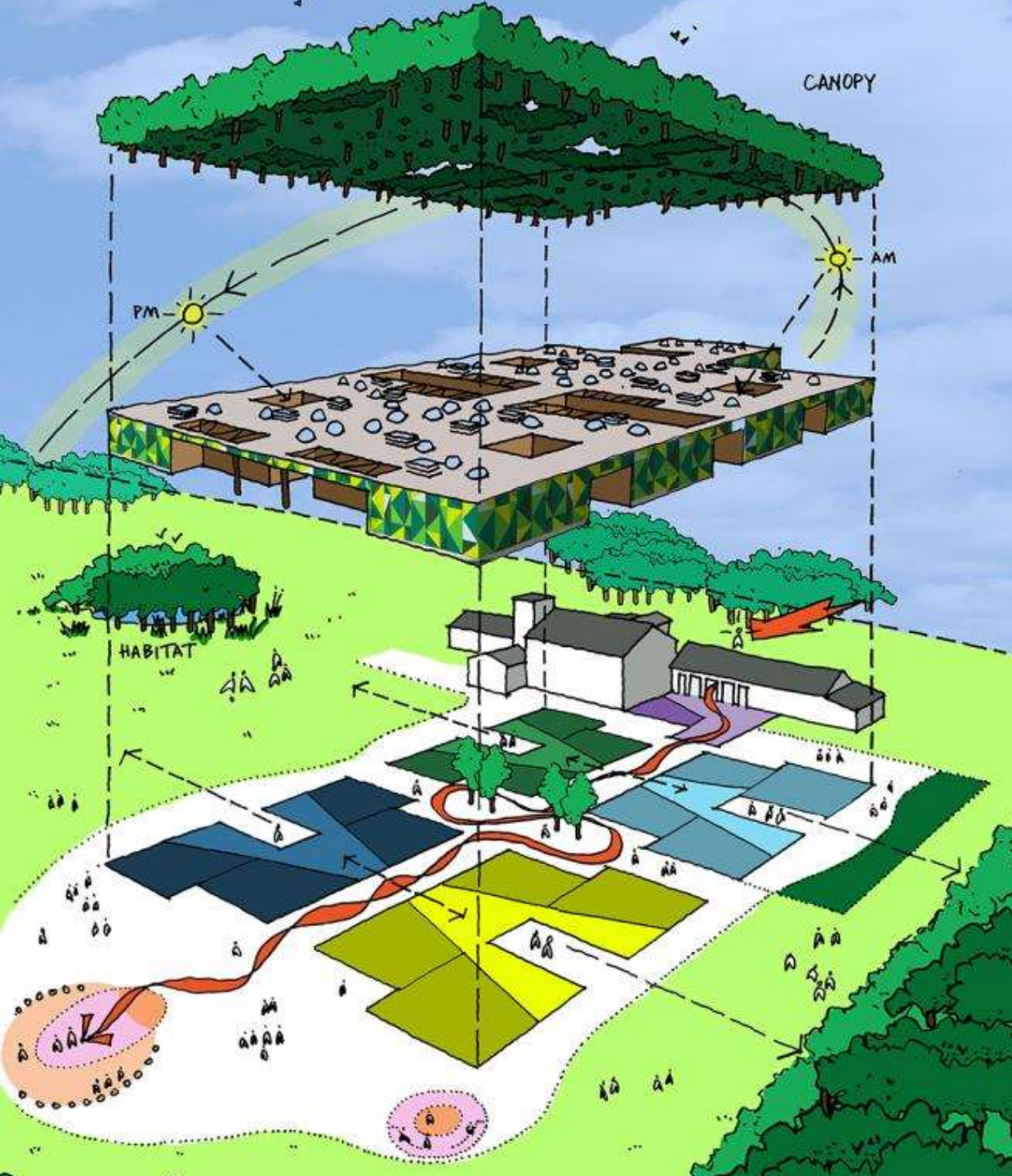












- **Built in just 17 weeks at a total project cost of only £3.8m**  
(including extensive landscaping and demolition work)
- **Price per m<sup>2</sup>: £1,900m<sup>2</sup>**  
(all in price)
- **Operational a full year ahead**  
of the local authority's original programme
- **Completed with a zero accidents**  
both in manufacture and in construction
- **50% less time spend on site;**  
**60% reduction in site personnel**
- **70% reduction in site waste,**  
of which **95% is recycled**
- **Estimated 50% reduced carbon**  
and **water during construction**
- **Lime Tree pupil attendance now at 96.3%**  
the highest ever



WA  
100  
2015

THE WORLD'S LARGEST ARCHITECTURE PRACTICES JANUARY 2015



