



Education & Skills  
Funding Agency

# Condition Data Collection (CDC) programme

**SPACES, 23 June 2017**

Jake Wood, CDC Communications and Engagement manager

# Who we are..



Department  
for Education



Education & Skills  
Funding Agency

# Today's session

## Presentation

- About the CDC
- Difference between CDC and local condition surveys
- Progress to date
- How condition is assessed
- How we're ensuring quality
- Access to data
- How responsible bodies can help

## Q&A to follow

# What are we collecting?

For **schools in scope**, we are collecting:

- **Condition** and **priority** information for all 'blocks'
- **Contextual information** about each site:
- **Compliance information**

**It's not just condition data!**

# Why are we undertaking the CDC?

**Our objective is to obtain 'snapshot in time' data which the DfE can use to:**

- 1. Allocate capital** to schools via their responsible bodies
- 2. Identify schools** for possible replacement
- 3. Support bids to treasury** for additional capital
- 4. Aid development of future condition funding policy**

# Changes since PDS programme

- **Condition** assessed and recorded differently
- More '**Asset meta-data**' collected
- **Common IT platform** (CDC Portal)
- **Information** shared sooner
- More **Quality Assurance** controls, including...
- Increased use of **photographic evidence**



# What the CDC is... and is not

- It provides a **consistent** view of condition that is compatible with PDS data
- It collects additional contextual information about each site
- Its delivery aligns with DfE allocations timescales.
  
- The CDC programme does **NOT** collect the same data as 'Asset Management Plan' condition surveys!
- It is not intended to replace locally commissioned AMP condition surveys

**It collects data to inform DfE funding decisions, not to directly inform local decisions about maintenance work.**

# Use of data

## CDC reports can be used to

- Build an understanding of condition need at your school(s)
- Highlight condition issues which need attention or further investigation
- Provide a view of roof condition
- Provide photographic evidence of condition issues



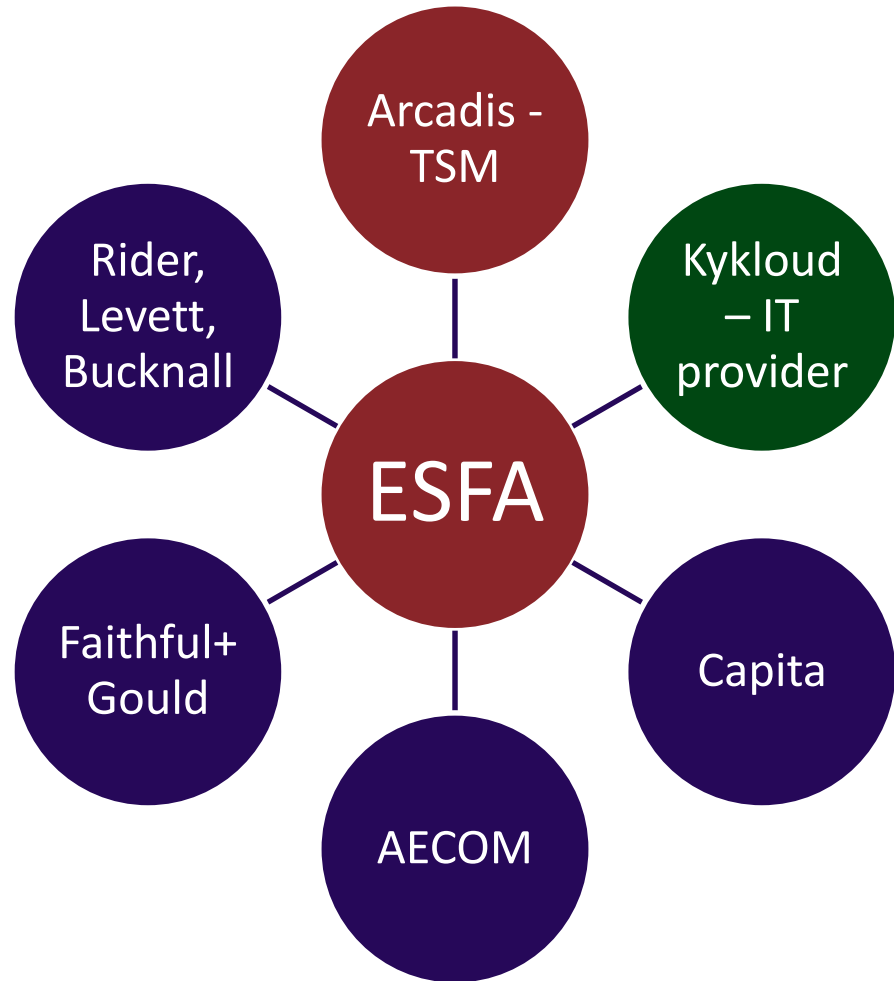


# Who are we working with?

## Deployment Services

## Management (TSM)

- Development and deployment of a CDC organisation
- Schedule & arrange site visits
- Portal and reporting functionality
- Technical support and administration
- Provide surveyors and engineers
- Survey training
- Visit sites to collect data
- Allocation of schools to surveying organisations



# Programme Delivery

**Scheduling of site visits is the sole responsibility of the Surveying Organisations (SOs)**

## Tranches:

- Roughly **two** Tranches per year
- Roughly **3,700** establishments in each Tranche
- Up to **1,200** site visits per month
- Tranche 1 & 2 list on GOV.UK

## SO scheduling of visits:

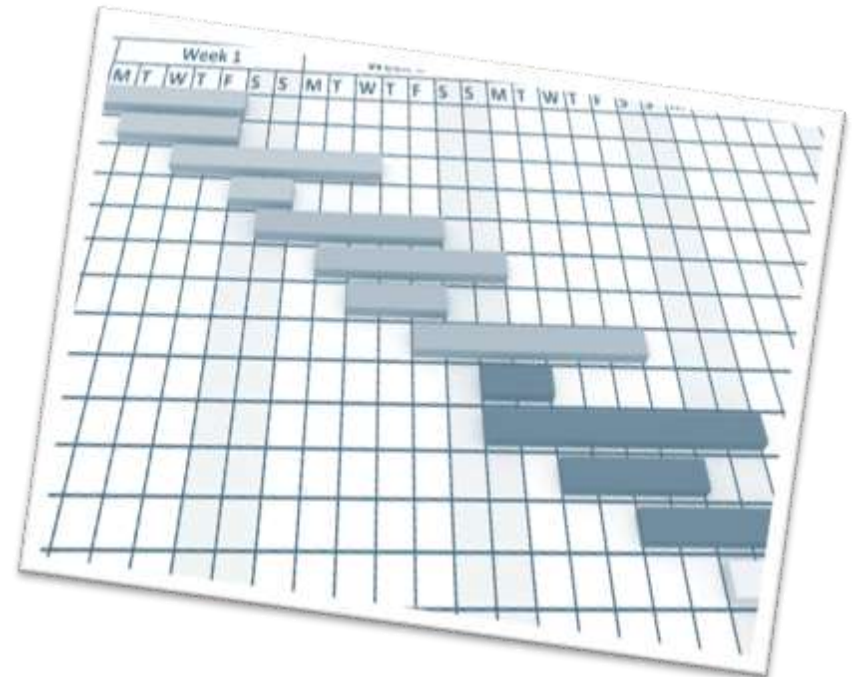
- Schools receive **letters of introduction** from ESFA and SOs at beginning of each tranche
- SOs write again to schools with **suggested site visit date**

# Progress to date

- Remainder of Tranche 1 visits being scheduled and undertaken.

## Next steps:

- First School Reports issued
- CDC Portal account set up for all responsible bodies
- Stakeholder groups meeting in June
- Tranche 2!



# How condition is assessed

- Surveyors now record proportion of condition grade against each construction type.
- New supplementary 'X' grading

## PDS:

Element/Sub-element/Construction type	Condition Grade	Priority
Floors & Stairs/Floor Finish/Carpet	C	2

## CDC:

Element/Sub-element/Construction type	Condition Grade	Condition Grade %	Priority
Floors & Stairs/Floor Finish/Carpet	A	0	N/A
	B	0	N/A
	Bx	0	N/A
	C	60	2
	Cx	0	N/A
	D	40	1

# Photographs & site plans

## Surveyors and engineers will take photos of:

- All blocks
- Construction types graded C, D, Bx, Cx
- All roof coverings
- All major health & safety issues observed

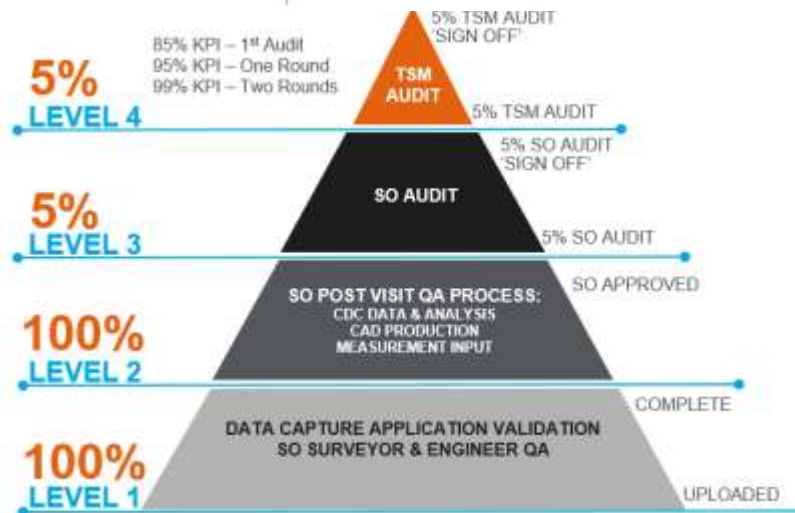
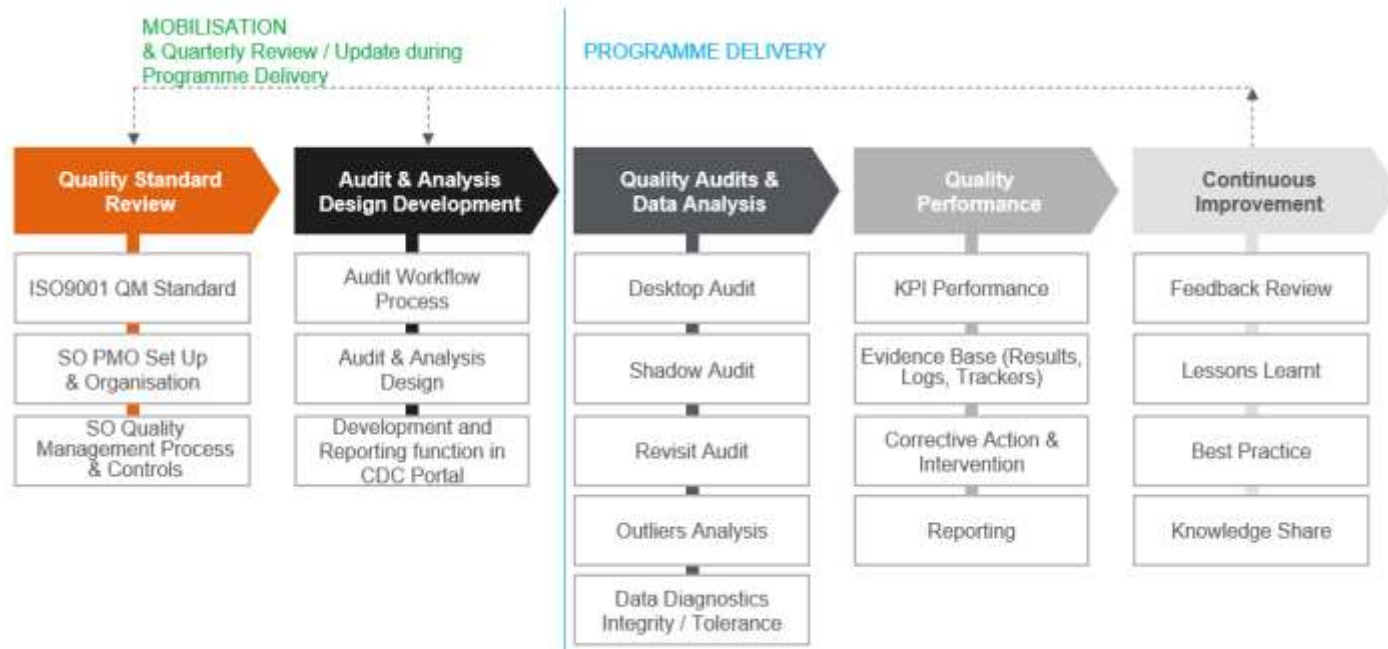
## Site plans:

- OS Mastermap base
- Boundary line and ESFA block labels
- Downloadable from CDC Portal by schools and RBs

# Ensuring data quality

- Methodology RICS endorsed
- Surveyor and engineer training and 'passporting'
- Single IT solution
- On-site validation of data by app and CDC Portal.
- Quality Assurance audits

# Quality Management



# Access to data

## CDC School Reports

- Downloadable by school and their responsible body
- Available up to 8-10 weeks after site visit (target)
- Site / block plans will be separate downloads from CDC School Report

## CDC Responsible Body Reports

- Aggregated data for all RB schools, in spreadsheet format
- Planned to be available from Autumn 17.

**All CDC reports, site & block plans should be accessed through the CDC Portal**



# How responsible bodies can help

## Help raise awareness and increase engagement amongst schools:

- Share information about programme with schools
- Provide support for schools if asked

## Provide feedback:

- Via stakeholder groups
- Via EBDOG networks
- Via 'Academies Enquiry Service'  
([www.education.gov.uk/efa-enquiry-form](http://www.education.gov.uk/efa-enquiry-form))

