

Online reading volunteers

with
Faithful & Gould

What is Chapter One?

It's an **educational programme** that aims to boost reading enthusiasm in **young readers**, setting them up for early success in education.

We work with schools that have higher-than-average numbers of pupils receiving **Free School Meals** and/or with English as an Additional Language.

Chapter One is also a registered charity in the UK.



Why Chapter One?

Unique benefits

- ❖ Online platform helps more volunteers read with more children, more easily
- ❖ Flexible, time-efficient way to volunteer with real impact
- ❖ Use of technology overcomes classroom space and resource constraints
- ❖ Engagement with a committed adult provides myriad benefits for struggling learners



A typical Chapter One child in the UK is likely to...

- ❖ Be one of the **38% of children** from disadvantaged backgrounds who, at 11, is unable to read adequately
- ❖ Be one of the **1 in 8 disadvantaged children** in the UK who doesn't own a single book
- ❖ Be one of the **1 in 7 children whose parents never read them a bedtime story**
- ❖ Have a teacher who knows the child desperately needs reading support, but who is **unable to devote 1:1 time**
- ❖ Have parents or carers who **have their own struggles with literacy** or don't read well in English



How does Chapter One work?



- ❖ 1:1 match with struggling 5- to 7-year-old
- ❖ Commitment for entire academic year
- ❖ Enhanced DBS or background check



- ❖ 30 minutes a week, from your desk during school hours
- ❖ Scheduling is flexible
- ❖ No software – just a phone and internet connection
- ❖ Teams of ten volunteers



- ❖ Webinar training given
- ❖ Fun, engaging activities to build fluency and comprehension
- ❖ Ongoing volunteer support

Faithful & Gould in Bradford

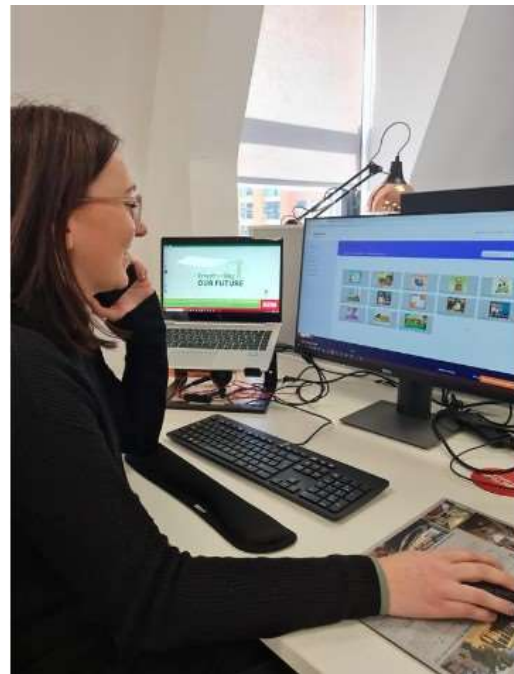
- ❖ Bradford/Leeds 39.8% of children live in poverty
- ❖ Ten volunteers reading with children at La Page, Fearnville and Byron primary schools
- ❖ 28%, 54.6% and 30.4% of children on FSM
- ❖ 157 sessions totalling 59.8 hours since November
- ❖ Supporting literacy in Bradford
- ❖ F&G Educational Outreach Strategy



Faithful & Gould volunteers

*“Not only have our volunteers developed **transferable skills** and **increased confidence** themselves, but we have seen a **measurable difference in the young people** we have been supporting. The virtual nature of the programme enables our project teams to log on from wherever they are based in the UK, whilst ensuring we are **directing our support to those young people who really need it.**”*

Neil Walker, Director, Faithful & Gould



7

Why Chapter One?

Chapter One can help suppliers and contractors to achieve their social value commitments

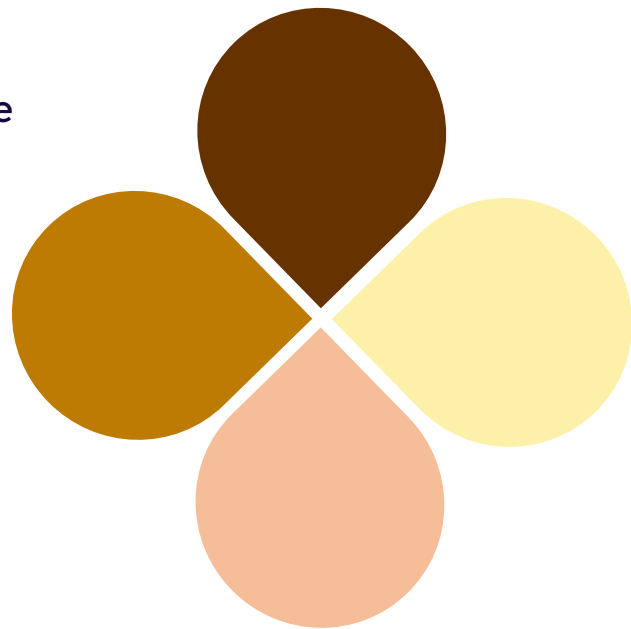
- ❖ Supporting local communities (remotely)
- ❖ Improving educational outcomes (TOMS)
- ❖ Developing the future workforce
- ❖ Employee motivation and wellbeing
- ❖ Volunteering hours (TOMS)



Why Chapter One?

Equality, diversity and inclusion: the evidence

- ❖ The attainment gap is largest for children and young people eligible for free school meals and those assessed with special educational needs (Education Endowment Foundation)
- ❖ Children from socially disadvantaged backgrounds are behind their well-off peers by about 11 months when they start school (The Sutton Trust)
- ❖ Children of colour are disproportionately represented among children living in households with a 'persistently low income' (ONS: Child poverty and education outcomes by ethnicity)



Why Chapter One?

Chapter One in the UK

- ❖ 70+ primary schools across the UK
- ❖ Manchester from September 2023
- ❖ 113 corporate partners
- ❖ 2,056 volunteer-child pairs
- ❖ 4,000 by 2024



10

Why Chapter One?

A growing network of 100+ companies in the UK (200+ internationally)



11

Our impact in 2021-22:

- ❖ 1,599 children had weekly reading sessions
- ❖ Children on the programme improved by an average of 3.9 reading levels
- ❖ 81% of volunteers said their child's reading confidence had improved
- ❖ 66% of teachers said they noticed better reading fluency



95% OF
TEACHERS

Felt that Chapter One was
beneficial for their pupils

97% OF
VOLUNTEERS

Said they'd recommend
Chapter One to a friend

The impact of Chapter One

“The one-to-one model has a big impact, and it isn’t just about the child reading the words...[the] consistent 30 minutes a week of an adult’s time makes a big difference to a child.”



David Taylor, year 1 teacher at Horton Grange Primary School, Bradford

13

Our partners make
a real difference to
children's lives.

Watch our [video](#)

Thank you!

