

Net Zero, Levelling Up and Essex: A National and Local Perspective

Tom Walker

Executive Director: Economy, Investment & Public Health

SPACES Conference, Reading University 22 June 2023

Contents

- **Essex: Opportunities and Challenges**
- **Levelling Up: National View and Essex Leadership**
- **Our response to Climate**
- **Our Devolution Journey**
- **Reflections**

Contents

- **Essex: Opportunities and Challenges**
- **Levelling Up: National View and Essex Leadership**
- **Our response to Climate**
- **Our Devolution Journey**
- **Reflections**



Why Greater Essex: Economy

A population of 1.9m increasing to 2m by 2034. Development of 200,000 new homes by 2040 and 50,000 new jobs by 2030 in key future sectors.

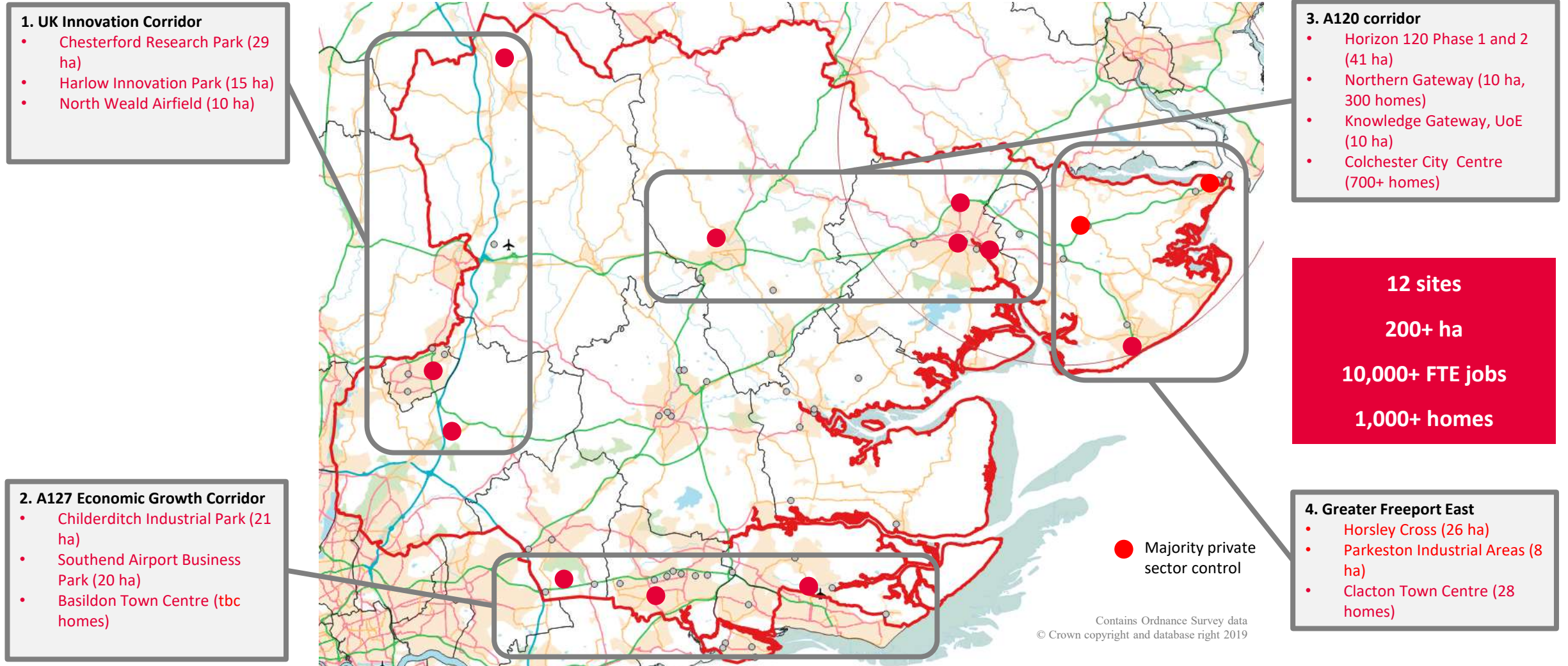
A gateway to trade and investment: two international airports & two Freeports and local universities producing world-class research with a global research

Our economy

- 47bn - total value of local economic output (GVA) and net contributor to the exchequer
- Untapped potential – local productivity is below the South East average – productivity at the SE average would mean an economy 17% bigger
- 700,000 strong workforce and 81,000 businesses operating in Greater Essex
- Employment Rate of 79.1% (3%> than national average)



Why Greater Essex: Potential Areas for Investment



Multiple Levelling Up Challenges



123,00 people including 40,000 children, living in the most deprived 20% of places in the UK



21% of households in fuel poverty



At Key Stage 4: 30% gap in educational attainment between the most and least deprived areas in the county



Health outcomes significantly worse in our most deprived areas

Multiple Climate Change Challenges



Water Scarcity

By 2050, projected shortfall across South East of up to 1.6 billion litres per day



Wildfires

c.1000 wildfires in summer 2022. Risk could double as temperatures rise.



Flooding

of homes in Essex at risk of surface water flooding expected to double by 2050.



Subsidence

of homes in UK at risk from subsidence will more than double by 2030, to 2.3 million

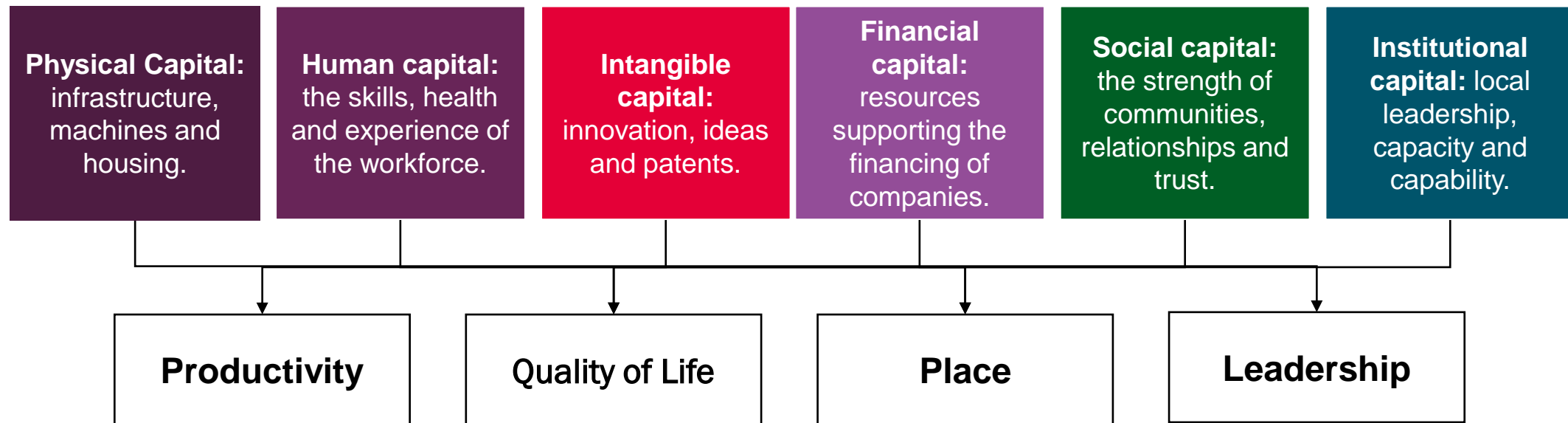
Sea level rise: by 2050, the sea level is expected to rise by 23-29cm and large parts of the Essex coast will be underwater.

Contents

- **Essex: Opportunities and Challenges**
- **Levelling Up: National View and Essex Leadership**
- **Our response to Climate**
- **Our Devolution Journey**
- **Reflections**

The National View: Levelling Up: six capitals model

The Government's white paper sets out why some places in the UK have fallen behind others using a model of 'six capitals' and their influence on 4 key outcomes – namely **productivity, quality of life, place, and leadership**:



The National View: Levelling Up: 12 Missions

The White Paper set out 12 missions, all geared towards long-term closing of spatial disparities and the structural divisions in our economy.

Each by 2030, calibrated against a spatial measure.

Across wide ranging aspects of economy and public services. Including, R&D investment, well-being, crime and devolution.

For example:

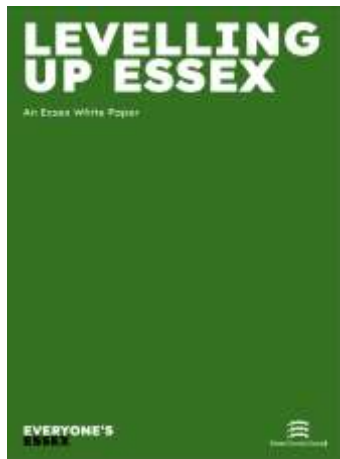
By 2030, every part of England that wants one will have a devolution deal with powers at or approaching the highest level of devolution and a simplified, long-term funding settlement.

Levelling Up: Essex County Council Response

WHAT DOES IT MEAN?



Everyone should have the opportunity to succeed in life and fulfil their potential; and that all places and communities should be able to share in this.



4 NATIONAL THEMES / 12 NATIONAL MISSIONS

BOOSTING PRODUCTIVITY, PAY, JOBS & LIVING STANDARDS

- Raising living standards
- Increasing R&D funding
- Stronger transport infrastructure
- Greater digital connectivity

SPREADING OPPORTUNITIES & IMPROVING PUBLIC SERVICES

- Strengthening education outcomes
- Growing the number people completing high quality skills training
- Reducing gaps in healthy life expectancy
- Improving well-being everywhere

RESTORING SENSE OF COMMUNITY, LOCAL PRIDE, AND BELONGING

- Raising the pride of place across the UK
- Giving more people the path to home ownership
- Reducing crime in the worst affected areas

EMPOWERING LOCAL LEADERS & COMMUNITIES

- Giving every part of England that wants one a devolution deal and a long-term funding settlement

Everyone's Essex – The Guiding Manifesto for Essex CC

Four strategic aims – 20 commitments that we will deliver:



Strong, inclusive and sustainable economy

- 1. GOOD JOBS**
- 2. INFRASTRUCTURE**
- 3. FUTURE GROWTH AND INVESTMENT**
- 4. GREEN GROWTH**
- 5. LEVELLING UP ECONOMY**



High quality environment

- 6. NET ZERO**
- 7. TRANSPORT & BUILT ENVIRONMENT**
- 8. MINIMISE WASTE**
- 9. GREEN COMMUNITIES**
- 10. LEVELLING UP ENVIRONMENT**



Health, wellbeing and independence for all ages

- 11. HEALTHY LIFESTYLES**
- 12. PROMOTING INDEPENDENCE**
- 13. PLACE-BASED WORKING**
- 14. CARERS**
- 15. LEVELLING UP HEALTH**



A good place for children and families to grow

- 16. EDUCATION OUTCOMES**
- 17. FAMILY RESILIENCE AND STABILITY**
- 18. SAFETY**
- 19. OUTCOMES FOR VULNERABLE CHILDREN**
- 20. LEVELLING UP OUTCOMES FOR FAMILIES**

Levelling Up to Essex Average means...



1,250 more people into employment

18,000 more people in higher level job roles

50,000 more jobs



18,000 fewer people are obese or overweight

21,000 more adults are physically active

12,000 less people with a long term limiting illness



50,000 fewer people living high air pollution areas

11,000 more people within 30 min access to employment by walking or public transport

20,529 less people living in unaffordable private rented accommodation



215 more children are school ready

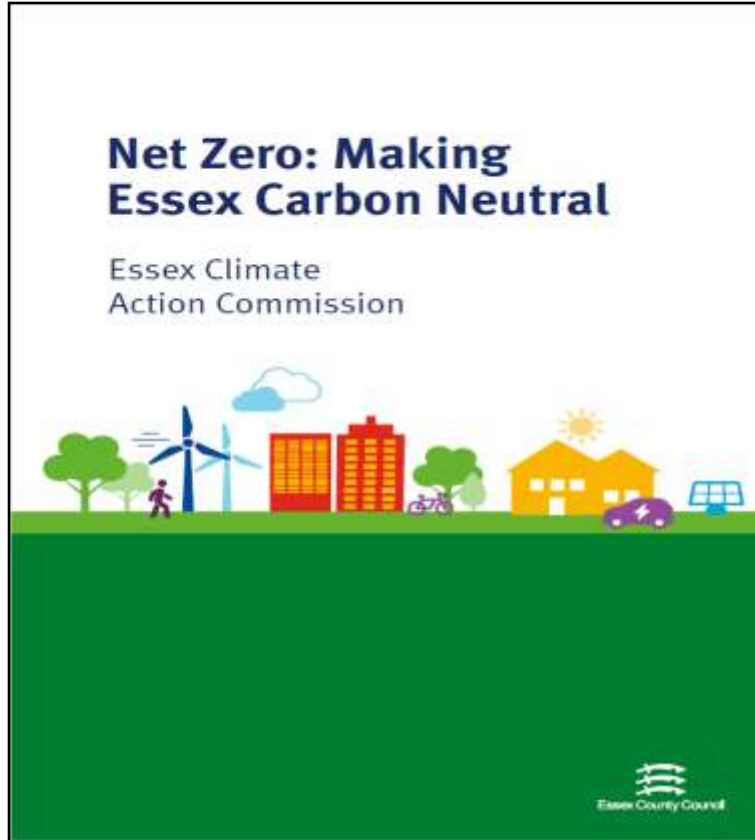
330 more children achieving 9-4 GCSEs in English and Maths

Double the number of students on free school meals able to access higher education each year

Contents

- **Essex: Opportunities and Challenges**
- **Levelling Up: National View and Essex Leadership**
- **Our response to Climate**
- **Our Devolution Journey**
- **Reflections**

Climate: Our Response and our Commission



2021 EV strategy; E-Scooter Pilots running; Ten Liveable Neighbourhoods
Community owned renewables
Essex Design Guide; Green construction training
Smart meters in schools
All new builds to have solar panels

2022 New schools commissioned net zero
25 school streets
10 local delivery hubs
5 E-cargo bike schemes
Energy sector innovation hub

2024 Network community reuse and repair hubs

2023 Essex Housing Demonstrator net zero development
Developers to fund flood risk management via CIL
Coastal flood resilience scheme in critical areas completed

2025 All New buildings net zero and support circular economy recycling
50% Essex schools retrofitted to net zero
All residents & businesses to have kerbside recycling
All biodegradable waste to beneficial use

2030 25% all roofs have solar panels
1.43GW solar energy
Bioenergy in difficult rural homes
Hydrogen store for renewable energy
20 Liveable Neighbourhoods
3 new park and choose sites

2030 All public sector estates in Essex NetZero
100% fuel poor homes retrofitted & supplied with renewables
2/3 Essex houses retrofitted
1/3 commercial buildings retrofitted
100% schools retrofitted
All new buildings carbon positive

2030 25% land natural green infrastructure (urban and rural)
50% farmland uses sustainable land stewardship
30% Essex in a Climate Focus Area
Per capita waste reduced by 10%
70% recycling rate
Zero waste to landfill

2035 All waste heat reused
All gas fired power repurposed to bioenergy
Network of community energy neighbourhoods in every district

2040 All housing retrofitted
Zero GHG emissions from housing
Essex renewables meets all county needs
30% all land natural green infrastructure
75% farm land adopts sustainable land practises

2050 All roofs have solar panels
75% all developments have integrated natural water management
100% farm land uses sustainable land practises

Unlocking the Opportunities of Net Zero

Green growth creating good jobs:

- Clean energy, construction and retrofit are key sectors for growth in Essex: Essex could see 15,900 green jobs by 2030, 27,700 by 2050 (LGA 2021)
- Delivering domestic retrofit in Essex is worth >£15 billion and can create over 12,800 new jobs.
- Opportunity to boost retrofit industry in deprived communities where housing quality is poor and lack of jobs is greater

Essex as a Centre of innovation

- **Net Zero Innovation Network:** Harnessing innovation to reach our net zero ambitions with over 80 Essex businesses, Universities developing innovative projects



Net Zero New Homes

160k new homes over the next decade

The Essex Design Guide: Planning standards for net zero design and climate resilience

Climate Planning Team to support planning authorities across Essex in embedding net zero standards

Essex Developers Climate Action Charter: developers coming together to work on net zero. The first in the UK.

Net zero homes coming forward: Essex Housing 10 home pilot site at Hargraves House, Chelmsford which will be *net zero in operation & construction*, and climate resilient



Retrofitting Existing Homes

Retrofitting Fuel Poor Homes

- Government funding for low-income households: over £15m to date, with a new award of a further £25m just announced.

Training for Front line Staff to Tackle Fuel Poverty

- Training for > 500 frontline local authority/NHS staff, developed and delivered with partners including Citizens Advice

Training for Residents & Businesses

- Retrofit training with Retrofit Academy: >300 individuals trained from level 2 to 5 in professional PAS2030 retrofit skills (focused in 5 levelling up areas: Harlow, Tendring, Basildon, Colchester and Castle Point)
- Supported 18 businesses with getting Trustmark Certified to undertake government funded retrofit
- CB Heat & EDF opened the largest heat pump training facility in Clacton - a Levelling Up area.



Retrofitting Existing Homes

Pioneering Essex – leading through Innovation

- First place nationally to deliver the Fit for Retrofit Programme – supporting Social Housing Providers to get Retrofit ready for Retrofit and SHDF
- First licensed Training Provision outside of The Retrofit Academy Head Office in Stafford delivering Professional Retrofit Training – training as The Retrofit Academy: Essex out of ACL venues in Harlow and Tendring
- ADEPT award winners for Clean Growth for our innovative approach to supporting the Retrofit Sector
- Shortlisted for the UK Net Zero Awards



Retrofitting ECC Estate

- 245 buildings (offices, libraries, children's centres, adult community learning centres, heritage assets) with a total floor area of circa 197,741m²
- Capital maintenance of around 200 schools
- Targets: 50% of schools to net zero by 2025 and the entire ECC estate by 2030

Progress:

- 23 solar installations on core estates, 31 on schools
- Double glazing in 14 core estate, 14 schools
- Significant investment (e.g. heat pumps, solar, LED lighting) across the larger core sites, Essex Records Office Goodman House, Great Notley Park
- All new school buildings are net zero (or very close)



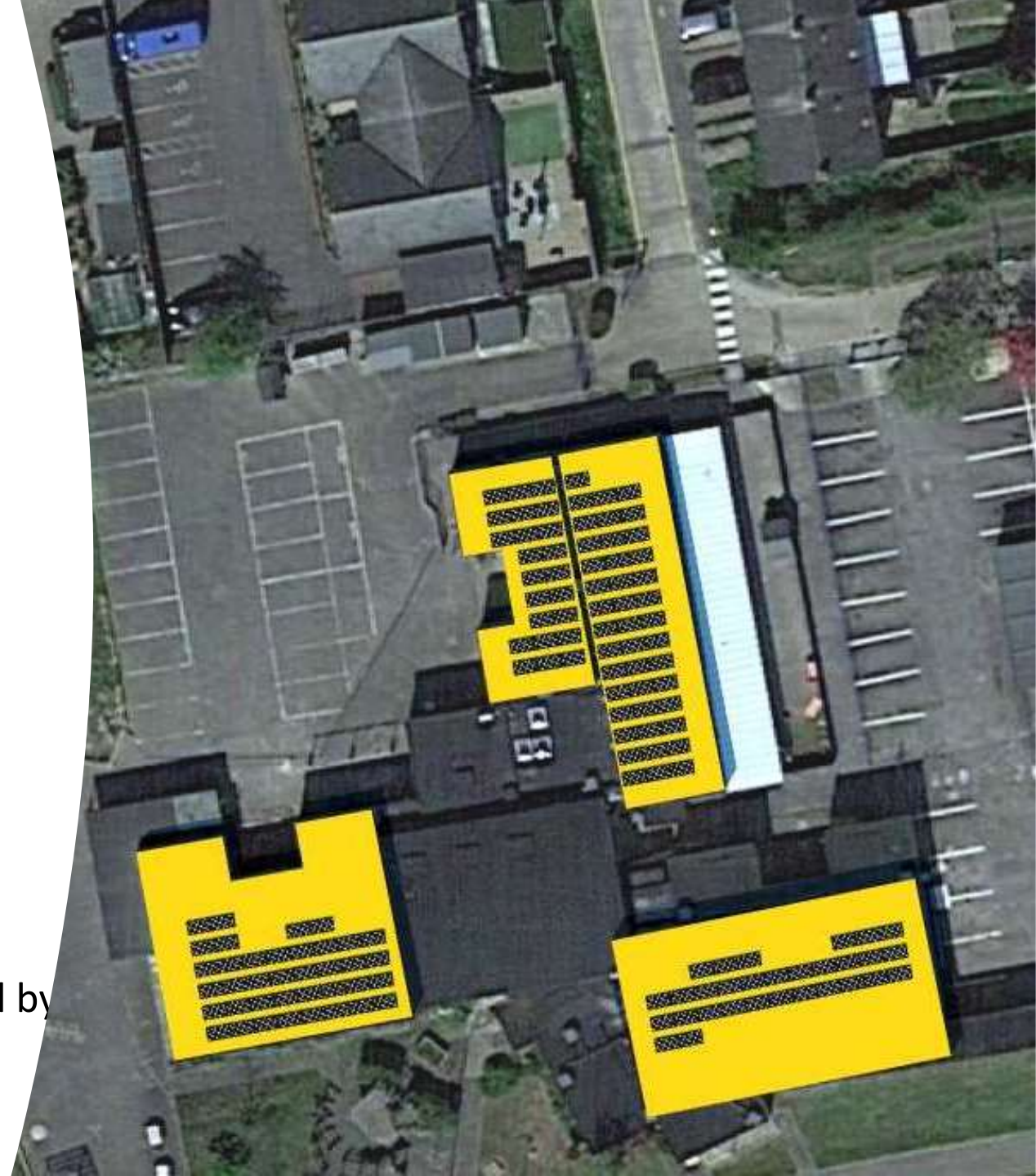
The Scale of Retrofit

Kingswood Primary School, Basildon.

- **ASHP - £340k**
- **LED - £59k**
- **Roof Insulation - £73k**
- **Cavity Insulation - £100k**
- **Solar Phase 2 >£30k**
- **Solar Phase 1 £54k**

£656k+ investment in 12 months.

Worked with the Connected Places Catapult on Innovation through procurement now being supported by the NZIN and academics from UCL to support the local supply chain to capitalise on work on Anchor Estate



Transport: Avoid, Shift, Improve

1



500+ bikes distributed through Essex Pedal Power

2



E-scooter trial: 1.5M+ rides with 82% modal shift from car

3



New sustainable Army & Navy junction, Chelmsford

4



Travel Essex journey planner: 20,000 downloads

5



Launch of DigiGo – electric demand responsive bus

6



£10m Active Travel schemes in Colchester, Chelmsford, Braintree, Wickford, Brentwood

7



Programme of Local Walking and Cycling projects (LCWIPs)

8



Five Healthy Streets in Colchester, Chelmsford and Brentwood

Biodiversity Net Gain

All new developments required to deliver at least **10% BNG** from November 2023. Sites will be required across the 12 Essex LPAs and the 2 Unitary Authorities

ECC trialling BNG across two sites, creating grassland and scrub habitats to benefit farmland birds, managed through grazing and coppicing.

Investment of £242k in years 1 and 2, both projects are financially self-sustaining from year 3 onwards. Sales of credits to developers expected to be **£2.5m** in total, generating £1.02m surplus over 30 years.

Benefits: enhanced biodiversity, reduced flooding & replenishment of groundwater, increased resilience, improved access to green space for residents.

Long term BNG could deliver 1916 hectares of nature sites in Essex by 2036, valued at >£200 million



Empowering Local Communities

Four Community Energy Groups

- Led by local people
- Delivering a pipeline of renewable energy projects worth £1,000,000.
- We aim to grow this network.

Solar Together

- Collective purchasing scheme for domestic solar & batter storage
- 3.5MW of solar capacity since 2018, displacing >1200 T of CO” annually



NZ at Heart of Regeneration

NZ built into town centre regeneration projects

Colchester: £19 million from Levelling Up Fund for city centre regeneration, includes:

- walking and cycling routes
- new public and traffic free spaces
- cycle storage and hire facilities for e-bikes, e cargo bikes and e scooters

Harlow: £20 million for new arts & cultural quarter, includes:

- pedestrian-focused public square
- pocket parks
- natural play & performance spaces



Net Zero Development by Brentwood Borough Council

Contents

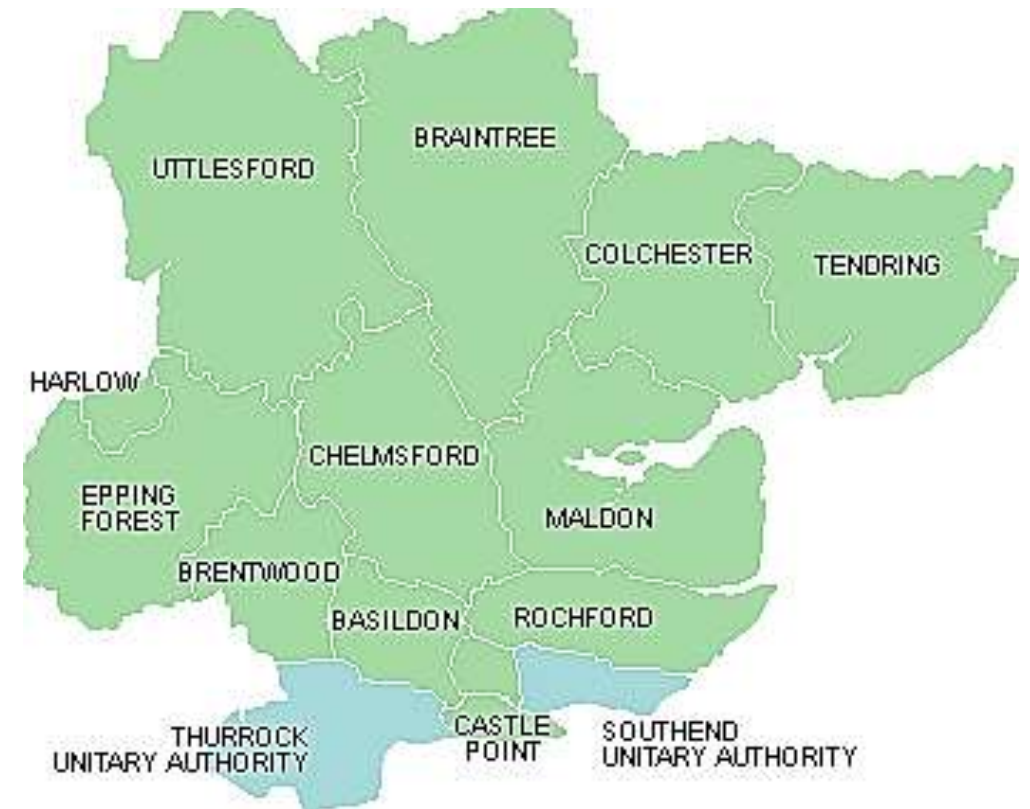
- **Essex: Opportunities and Challenges**
- **Levelling Up: National View and Essex Leadership**
- **Our response to Climate**
- **Our Devolution Journey**
- **Reflections**

What do we mean by devolution?

The Levelling Up White Paper is focused on the decentralisation of powers, decision making and funding away from Central Government to local democratically elected & accountable bodies elsewhere in England.

It is not about local government reform or reorganisation, taking funding from existing councils, or becoming a contracted delivery agency for the government.

Devolution from central government means that a local authorities have more power and funding locally to focus on responsibilities focused on strategic priorities of sub-regional importance.



Devolution: Delivering for Greater Essex

- Become the **fastest growing economy** in the UK outside London
- Tackle **deprivation and disadvantage** by widening access to good skills and jobs
- Give people the **skills they need for the future** by tailoring skills provision to needs & support for reskilling
- To address **future housing needs** and ensure infrastructure is in place
- Meet **future transport needs** by improving connectivity, reducing congestion and support shift to active travel
- Look after the **environment** by accelerating the transition to net zero and supporting our natural environment
- Boost our **infrastructure** by boosting the rollout of superfast digital connectivity to all places including rural areas
- Support **community safety** by strengthening communities and taking a public health approach
- Reduce **health inequalities** by addressing the wider determinants of health and supporting healthy lifestyles
- Improve **public services** by exploring opportunities for collaboration and better use and sharing of data

Devolution: Timeline and Next Steps

2022

June

Leaders and Chief Executives agree to explore case for devolution in Greater Essex

August to December

Workshops held involving Members and officers from local authorities and also involving Police, Fire and Crime Commissioner.

December

Leaders reviewed progress and agreed to move forward with drafting an EOI to government

2023

February - March

EOI published and discussed at upper tier cabinets and other boards

24th March

EOI finalised and submitted to Government

April - October

Negotiations with Government

October

Target date for announcing the agreed deal

Contents

- **Essex: Opportunities and Challenges**
- **Levelling Up: National View and Essex Leadership**
- **Our response to Climate**
- **Our Devolution Journey**
- **Reflections**

Reflections on National and Local Government

- **National Government must set vision and direction**
- **Local Government provides insight, passion and innovation**
- **Capacity is thin and the challenges are huge**
- **"Tight and loose" on scale and joint working**
- **Private & public partnership is key**
- **With a long-term strategy grounded in evidence and investable propositions**
- **Devolution allows flexibility and agility, and amplified leadership**

This information is issued by:
Essex County Council

Contact us:
tom.walker@essex.gov.uk

Essex County Council
County Hall, Chelmsford
Essex, CM1 1QH

 [Essex_CC](#)

 [facebook.com/essexcountycouncil](https://www.facebook.com/essexcountycouncil)

The information contained in this document
can be translated, and/or made available in
alternative formats, on request.